

# **Green Sky Thinking Week**

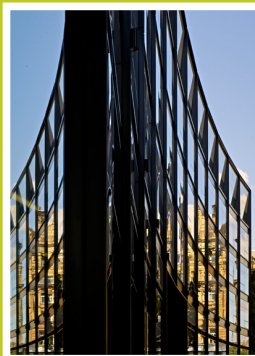
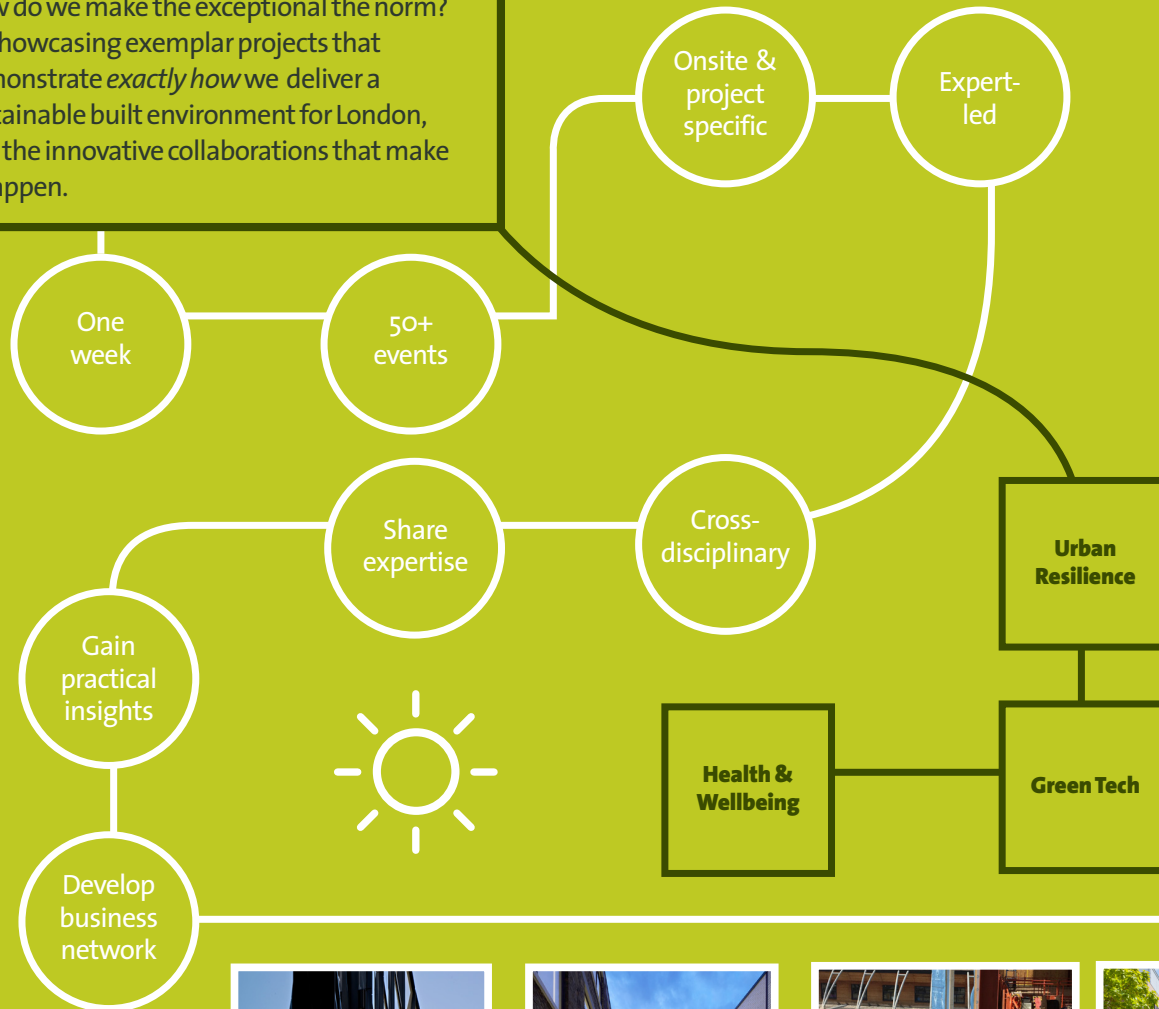
## **25–29 April 2016**



**[greenskythinking.org.uk](http://greenskythinking.org.uk)**

## Green Sky Thinking Week...

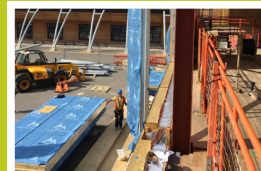
How do we make the exceptional the norm?  
By showcasing exemplar projects that demonstrate *exactly how* we deliver a sustainable built environment for London, and the innovative collaborations that make it happen.



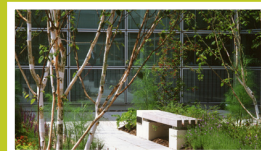
Allford Hall Monaghan Morris



Marks Barfield Architects



Nicolas Hare Architects



Greengage Environmental



Jestico + Whiles



Hurley Palmer Flatt

**25-29 April 2016**

2016 marks the 6th year of Green Sky Thinking Week, the sustainability initiative of Open-City.

*"Green Sky thinking week has become an important event in the calendar for all involved in designing, building and maintaining sustainable places and structures. The 2016 programme is the most exciting yet, offering a wide range of opportunities for professionals and practitioners to see, learn about, visit and debate new initiatives and cutting edge developments in London. I hope it proves as valuable and enjoyable to all those taking part as it has been to those of us engaged in planning the week."*

Nick Raynsford, Open-City Trustee

During the week leading industry professionals will highlight their solutions to current London challenges through the programme themes: Urban Resilience; Green Tech; Health and Wellbeing.

Addressing the need for joined-up thinking, Open-City invites every stakeholder to join the conversation. All events are free to attend but reserving your place is essential. Check [greenskythinking.org.uk](http://greenskythinking.org.uk) for full event information and the most up-to-date event listings.

**Book your place now**  
**[greenskythinking.org.uk](http://greenskythinking.org.uk)**

**@opencityorg #greensky**



# GreenSky Thinking

## Event listings by day

### Monday 25 April

#### Retrofit & the Importance of Independent Advice

**ECD Architects**  
10.00am-12.30pm & 6.30pm-8.30pm  
Join our seminar reviewing the importance of independent advice in small home retrofits using our soon to be completed SMART Homes / Green Deal Communities project as a case study.

#### Green infrastructure as a building service design challenge

**ARCC & London South Bank University**  
10.00am-12.30pm Design challenge launch, briefing and technical talks  
Followed on Friday 29th, 3.30pm-5.00pm including a reception & an exhibition of the designs.

The LSBU Clarence Centre for Enterprise & Innovation is challenging industry and academia to collaborate to develop ideas for how internal green infrastructure could make their offices healthier, more sustainable and climatically resilient. Join us for expert rapid briefings and contribute your ideas in a design-thinking workshop.

#### People, energy or space: what is more important to drive design?

**Hurley Palmer Flatt**  
6.00pm-7.30pm  
A debate on the way occupant wellbeing, energy consumption and the need to maximise space can influence design, and how we can design to improve upon one or all of these three metrics. Does one prevail?

#### Sustainability, is it only skin deep?

**Akt II**  
6.00pm-8.00pm  
As designers in the industry we like to talk the talk, but how serious are we in terms of green sky thinking? Many would consider sustainability as nothing more than another hurdle, a tick box exercise that is frankly par for the course. This session will look at alternative thinking, ways of finding opportunity and making it count beyond BREEAM.

### Tuesday 26 April

#### An Enormous Ambition

**Arup**  
8.00am-10.00am  
In 2016, Arup will share its thinking on how we are influencing sustainable outcomes; including, adapting to changing weather patterns; design influencing cities and asking how little we can build.

#### Is Mixed Mass the Answer?



**Broadway Malayan Group**  
8.00am-10.00am  
As the UK grapples with housing shortages, fuel poverty and an increasingly critical sustainability agenda, are the opportunities around passive design in the UK being overlooked? Broadway Malayan's technical director looks at how dynamic modelling is helping change the perception of what's possible.

**Optimising Energy Performance in Buildings**  
**Carbon Credentials Energy Services Ltd**  
8.30am-10.30am  
Join us at our Energy Strategy Workshop to discuss how capital projects, staff engagement and improved data management can lead to reduced energy consumption and increased energy efficiency in buildings.

#### Living Cities: Our approach in practice

**Grosvenor**  
8.30am-10.30am  
©Living cities© is a philosophy which supports our strategy, guiding us to create, to invest in and to manage properties and places that contribute to the enduring success of cities. Join us for breakfast followed by a walking tour of our Mayfair estate, to see how we putting our ©Living cities© approach into practice.

#### Energy Efficiency Innovations

**Islington Council**  
2.30pm-4.00pm  
Tour Islington Council's latest energy efficiency innovations at their offices in North London. In 2015 the Council installed LED office lighting, energy efficient server racking and a solar PV array on the roof. Find out how these innovations are reducing the Council's energy use and get top tips for your own projects. In partnership with Islington Sustainable Energy Partnership.

#### 'Walking among Giants': an urban climate walking tour

**CIBSE Resilient Cities and Urban Generation**  
4.00pm-6.00pm  
The walk presents a unique view of the City of London through the role of tall buildings in creating distinct microclimates and offers a novel perspective on the City's dramatic and changing skyline.

#### Island Estate: Reintegrating the Neighbourhood

**Cullinan Studio**  
5.30pm-7.30pm  
A knowledge-sharing event based on an investigative design project to re-connect a residential estate with its urban surroundings. Ideas will include landscaping, route-making, place-making and maybe even proposals for new buildings to make exciting improvements.

#### North West Cambridge: Sustainability approach to a new community – from masterplanning to construction



**AECOM**  
6.30pm-8.30pm  
North West Cambridge, a major urban extension to the city of Cambridge will be the largest Code Level 5 development built. AECOM and Wilkinson Eyre present its sustainability story, from masterplanning to construction; discuss the importance of collaboration between disciplines; and provide insight into how sustainable communities of the future might develop.

#### Vital transports: Bringing cities to life

**Make Architects**  
6.00pm-8.00pm  
Ensuring people can move around cities in a way that enhances health and wellbeing is key. Make Architects presents research from the Future Spaces Foundation think tank, which measures the connectivity of urban transport systems in 12 cities around the world and examines how well they allow citizens to get around in the most efficient, sustainable and healthy way.

#### Sustainable Housing: Beyond the Bonfire

**Max Fordham**  
6.00pm-8.30pm  
Rather than stimulating house-building, current legislation has left a number of sustainability issues side-lined. Can we accommodate for broader, altruistic concerns, with increasing focus on the 'user'? Bill Getting introduces a workshop to explore some issues marginalised by recent policy changes.

#### Engineered to Perform: Regeneration and Resilience at Queen Elizabeth Olympic Park

**BuroHappold Engineering and London Legacy Development Corporation (LLDC)**  
6.00pm-9.00pm  
BuroHappold and LLDC present unique insights, experience and future plans for the regeneration of Queen Elizabeth Olympic Park. Hear how the transformation has been underpinned by the design and delivery of sustainable buildings and infrastructure to enable health & wellbeing, environmental performance and long term resilience.

#### Designing for longevity or deconstruction: is it a choice?

**Nicholas Hare Architects**  
6.30pm-8.30pm  
Should new buildings be designed for long life with built in adaptability for future re-use, or designed for a limited lifespan and ready deconstruction? The circular economy makes a lot of sense for many industries, but is it the right approach for building design, where re-use and adaptation may be more resource efficient than deconstruction and recycling?

#### Realising the Low Line

**Team London Bridge**  
6.30pm-9.00pm  
The railway viaduct from Vauxhall through South Bermondsey is one of south London's most striking architectural features. These spaces house manufacturing, offices and cultural spaces and local partners are recognising their immense potential by working together to drive a collective vision for an interconnected Low Line.

### Wednesday 27 April

#### Verde SW1

**Brookfield Multiplex Construction Europe**  
8.30am-10.30am  
A breakfast presentation for Verde SW1 project, followed by a site tour. Hear about Verde's sustainable built design and accomplishments in environmental and social objectives throughout the whole construction process.

#### The early bird gets a greener building: how collaboration from the beginning of a project helps to build for a better society.

**Skanska**  
8.30am-10.30am  
Skanska experts share their experience of projects where involving the main contractor during a scheme's development phase has led to greater sustainability benefits. Held at The Monument Building, where Skanska is both developer and contractor.

#### Designing for Health and Wellbeing: Practical Experiences

**Greengage Environmental**  
8.30am-10.30am  
Why are clients choosing to develop healthy, active communities at the same time as profitable buildings, and what have the challenges and successes been? Greengage launches the results of its research into the industry experiences of designing for health and wellbeing.

#### Getting Less Dense About Density

**Penoyre & Prasad**  
8.30am-10.30am  
We will explore the complexities of density to try and answer questions such as: Can we refine and enlarge the toolkit that helps decide how much we should build where? What is the relationship between density, wellbeing and sustainability? What do we have to learn to deal with local densities in London that now rival Hong Kong?

#### Internet of Beings; A People Powered World

**Pavegen Systems Ltd**  
10.30am-11.30am  
The launch of Pavegen's flagship retail installation (Montifichet Road, Olympic park east, London) of its latest smart flooring solution, which generates renewable power and data from every visitor's footsteps.

#### Mace and Great Portland Estates on Post Occupancy Evaluation.

**Mace and Great Portland Estates**  
4.30pm-6.30pm  
Mace and Great Portland Estates have been working together to review and reflect on completed projects across GPE's commercial estate using post occupancy evaluation. The findings have been fed back to GPE's design teams to help close the performance gap between designed and built environments. This event will discuss some of the findings and how GPE have used the details to inform future designs and schemes.

#### Sustainable Infrastructure

**Temple Group**  
5.00pm-6.30pm  
Key figures from the world of infrastructure give 'pecha-kucha' style pitches on how they think London could be more sustainable, how infrastructure projects contribute to regeneration and renewal, and what's needed next.

#### Sensing the place – experiences and wayfinding in a changing climate

**ARCC network (Adaptation and Resilience in the Context of Change)**  
5.30pm-9.00pm  
Drawing from research and practice, this event explores how design of the urban environment can affect our experiences and how we orientate ourselves within it. It examines how climate change or climate disruption could present challenges for urban wayfinding and the sensory experience of a place. Part of the 'Feeling good in public spaces' dialogue series.

#### Hellbeing or Wellbeing: living with density



#### Mae

**6.00pm-8.30pm**  
How can good placemaking and quality of life be compatible with high densities? Are cities inherently unhealthy places? Are they exclusive environments? How can they contribute to decarbonisation of our society, to civil life and wellbeing? A multidisciplinary panel will respond to these questions.

#### Designing London for Resilience

**Hawkins Brown**  
6.00pm-8.30pm  
With the mayoral elections taking place on 5 May 2016, should the new Mayor of London be looking to tighten housing regulations? Or is it growth at any cost? Join us for a panel discussion and Q&A to explore the challenges of creating a resilient future for London.

### Thursday 28 April

#### Launch: Fit-out for the Future: a guide for the industry

**Better Buildings Partnership Ltd**  
8.00am-10.30am  
Thousands of offices and shops have new fit-outs every year yet sustainability is so often forgotten in the process. To combat this the Better Buildings Partnership will discuss their latest practical guide on how to incorporate sustainability into the fit-out process and why it's an opportunity landlords and tenants can no longer afford to miss!

#### Sustainability in design and delivery at King's Cross



#### Bennetts Associates Architects, Argent, London Borough of Camden

**8.30-11.00 am**  
Bennetts Associates are working with Argent to design a number of sustainable buildings at King's Cross. The first project completed was Camden Council's BREEAM 'Outstanding' building at 5 Pancras Square. Bennetts Associates will discuss their work at King's Cross and provide guided tours of Camden's headquarters and King's Cross.

#### Green Sky Gardens: The Ascent & Consequences of High Rise Green Space



#### Bouygues UK

**8.30am-10.30am**  
A working insight into the benefits and challenges of providing green space on high-rise projects focusing on two #builtbybouygues schemes: the sky gardens of Manhattan Loft Gardens and the roof gardens at Battersea Power Station, as well as other international developments.

#### Innovative intelligence gatherers

**Allford Hall Monaghan Morris**  
8.30am-10.00am  
A diverse group of innovative intelligence gatherers will tell us about wearable technology measuring physiological responses to the Angel Building; the relationship between architecture, energy and productivity at AHMM's offices; data-collection, technology and provoking behaviour change through the internet of things; and the impact of a cultural approach to creating sustainable communities and outcomes for a new hospital.

#### Urban Resilience: A Collaborative Approach

**Turley**  
8.30am-9.30am  
This pecha kucha style event and Q&A will examine from a number of different perspectives how the industry can work together to respond to challenges faced in our urban environment. Industry experts from Turley, British Land and the Greater London Authority present at this breakfast event.

#### Using technology to deliver better places:

**Queen Elizabeth Olympic Park**  
**Mace, London Legacy Development Corporation and Engie**  
10.00am-12.00pm  
LLDC and Engie will talk through the technical interventions that are enabling them to deliver smart, integrated approaches to achieving enhanced sustainability outcomes and better user experience for the iconic sporting venues on Queen Elizabeth Olympic Park and the energy and carbon ecosystems that support them. Delegates will then be taken on a tour of one of the energy centres powering the largest district energy network in the United Kingdom.

#### WELL fit and ready

**Cundall**  
6.00pm-9.00pm  
An introduction to the WELL Building Standard, a case study and tour of the Cundall office fit-out, and a developer's view of providing WELL ready spaces for tenants.

#### Resiliency: "Unplugged"

**Elementa Consulting**  
6.00pm-8.00pm  
A cross section of passionate contributors share their perspectives on resiliency and the "unpluggability" of projects. Expect surprising insights on resiliency from research, design, engineering, sustainability and end-user viewpoints.

#### Sustainable building materials and Circular Economy

**Sturgis Carbon Profiling LLP**  
6.00pm-8.00pm  
Sturgis Carbon Profiling share their expertise and approach to Life Cycle Analysis in respect of sustainable building materials. Presenters will discuss the Cradle-to-Cradle and Circular Economy principles, highlighting some best practice around the re-use and recycling of materials, and the potential to reduce resource depletion and embodied carbon.

#### Measuring Building Performance

**BuroHappold Engineering and Derwent London**  
6.00pm-9.00pm  
High performance buildings can increase productivity, reduce running costs and meet corporate sustainability targets. BuroHappold and Derwent London present findings, insights and recommendations from post-occupancy evaluation of health, wellbeing and energy within Derwent's London portfolio.

#### Creative Re-use

**Marks Barfield Architects**  
6.30pm-8.30pm  
Tour of 82 Baker Street outlining how the team responded to retrofit rather than re-build, resulting in an energy efficient and flexible workplace that complements and enhances the building's heritage whilst reflecting the personality and brand of both the tenant and landlord.

#### The Policy Gap – Bridging the zero carbon void

**XCO2 Energy**  
6.30pm-8.30pm  
One year on from the 2015 General Election and we've seen the scrapping

of zero carbon, reductions in renewable subsidies and the end of Green Deal. A policy and funding gap now exists but what should fill it? Join us for an informal debate with an expert panel of policy influencers and building professionals.

#### Lessons learnt from Scandinavia: how to create healthy environments



#### White Arkitekter

**6.30pm-7.30pm**  
Northern European precedents are often used as a starting point on urban design projects in the UK – but what elements of these can genuinely be used in an economically and politically dissimilar environment? Tyréns and White Arkitekter show examples of how they have achieved well-balanced, healthy environments through a collaborative and holistic process.

### Friday 29 April

#### Building communities & creative partnerships

**Regent Street Management Direct**  
8.30am-10.00am  
Regent Street – a world-class retail, leisure and business destination – is continuing to build a strong community. Take part in our interactive talks that demonstrate how creative partnerships and collaborative initiatives continue to build a healthier, happier and sustainable community in this iconic part of London.

#### Improving health and well-being in the workplace with sensory gardens



#### Feeling Good Foundation, CIBSE Intelligent Building Group & ARCC

**9.30am-12.30pm**  
This seminar will both disseminate evidence and encourage discussion on how sensory gardens can help reduce stress levels of office workers, refocus their attention and improve their productivity.

#### The environmental strategy behind London's highest public garden

**Hilson Moran**  
8.30am-10.30am  
The Sky Garden at 20 Fenchurch Street is London's highest public garden. This talk and tour will describe some of the challenges faced and techniques used during the design process.

#### POE – The Importance of Collaboration

**Metropolis Green**  
8.30am-9.30am  
How can we ensure continuous improvement in sustainable buildings? Metropolis Green will look at the value of Post-Occupancy Evaluation, and how landlord and tenant collaboration is key to driving continuous improvement in both the operation of existing buildings and the construction of future buildings.

#### Regency Regeneration: Pitzhanger Manor and Walpole Park

**Jestico + Whites**  
10.30am-12.30pm  
An eclectic look at the Heritage Lottery Funded projects in and around Pitzhanger Manor and Walpole Park. Jestico + Whites, Ealing Council and Natural Building Technologies introduce the ongoing and completed projects, with a focus on health and wellbeing in the context of establishing a lasting cultural and architectural legacy for the area.

Book your place now:

[greenskythinking.org.uk/book](https://greenskythinking.org.uk/book)



## About Open-City

Open-City is London's leading independent, non-profit built environment organisation. It champions the value of well-designed places and spaces in making a liveable and vibrant city and the role everyone places within it. Our mission is to champion a better-built environment and by implication a more sustainable one.



@opencityorg #greensky



greenskythinking.org.uk/  
linkedin

## Sustainability Soundings Board

Nick Raynsford, Open-City Trustee  
Tom Appleton, Rocket Investment  
Tessa Barraclough, Peabody  
Sarah Cary, British Land  
John Davies, Derwent London  
George Georgiou, Elliott Wood Partnership  
Hattie Hartman, Architects' Journal  
Paul Heather, Skanska  
Isabel McAllister, Mace  
Alex Nickson, Greater London Authority  
Duncan Price, BuroHappold Engineering  
Craig Robertson, Allford Hall Monaghan Morris  
Victoria Thornton, Founding Director, OBE  
Hon FRIBA

# Open City

Opening eyes,  
minds and doors

18 Ensign Street  
London E1 8JD  
Phone +44 (0)20 7380 0412  
open-city.org.uk

## Open City Board of Trustees

Alison Brooks RIBA  
Edwin Heathcote (FT Architecture Critic)  
Stephen Howlett (Peabody)  
Crispin Kelly (Baylight Properties)  
Helen Newman (Olswang LLP)  
Tony Pidgley CBE (Berkeley Group)  
Nick Raynsford  
Alan Stanton OBE RIB

## Sponsors

BUROHAPPOLD  
ENGINEERING



## Supporters

ARUP

SUPPORTED BY  
MAYOR OF LONDON

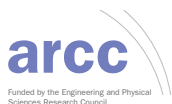
## Media Partner



## Official Bookseller

RIBA # Bookshops

## Institution Supporters



Landscape  
Institute  
Inspiring great places



## Open-City Corporate Members



DERWENT  
LONDON

elliottwood

SKANSKA



PEABODY



.ing

ALLFORD  
HALL  
MONAGHAN  
MORRIS



greenskythinking.org.uk

Contact Katerina Papavasileiou  
Green Sky Thinking, Sustainability Manager  
kpapavasileiou@open-city.org.uk  
© Open-City 2016